



A Gateway to 4th Industrial Revolution via Human Capital Development -PAP2SN

By

Saul Paul Phiri - Copperbelt University

Collaborators: Fulvio Franchi (UNIBA - Italy), Prosperity Simpemba (CBU - Zambia), Jackson Siantuba (CBU), Godson Abbey (CBU), et. al.

AfAS Conference: 24 March 2026, Kasane, Botswana

Background



60 months

Implementation period

Cohorts

Student and staff selection

Degree-seeking

Credit-seeking

Academic/
administrative staff

6 – 24 – 48 months

Master: 6 – 24
months

Doctorates: 6 – 48
months

Staff: 1-6 months

Target Group I
BIUST,
AAU, UUN,
WITS, CBU

Target Group II



The PAPSSN will assign **62 scholarships through 4 cohorts distributed over 60 months:**

- 15 TG1 Staff mobility grants for visits ranging between 1 and 3 months;
- 20** TG1 Master students (12 credit seeking and 10 degree seeking);
- 10 TG1 Doctorate students (4 sandwich PhD and 6 degree seeking);
- 13** TG2 Master students (6 credit seeking and 8 degree seeking);
- 4 TG2 Doctorate students (2 Sandwich PhD and 2 degree seeking).



UNIVERSITÀ
DEGLI STUDI DI BARI
ALDO MORO



NAMIBIA UNIVERSITY
OF SCIENCE AND TECHNOLOGY



UNIVERSITY OF THE
WITWATERSRAND,
JOHANNESBURG



MAP KEY



Partner Countries

Part of the PAP2SN Kick-off Team



www.pap2sn.com



Thematic Areas

- Space Science
- Astrophysics
- Astrochemistry
- Astrobiology
- Planetary Geology

Scholarship Categories

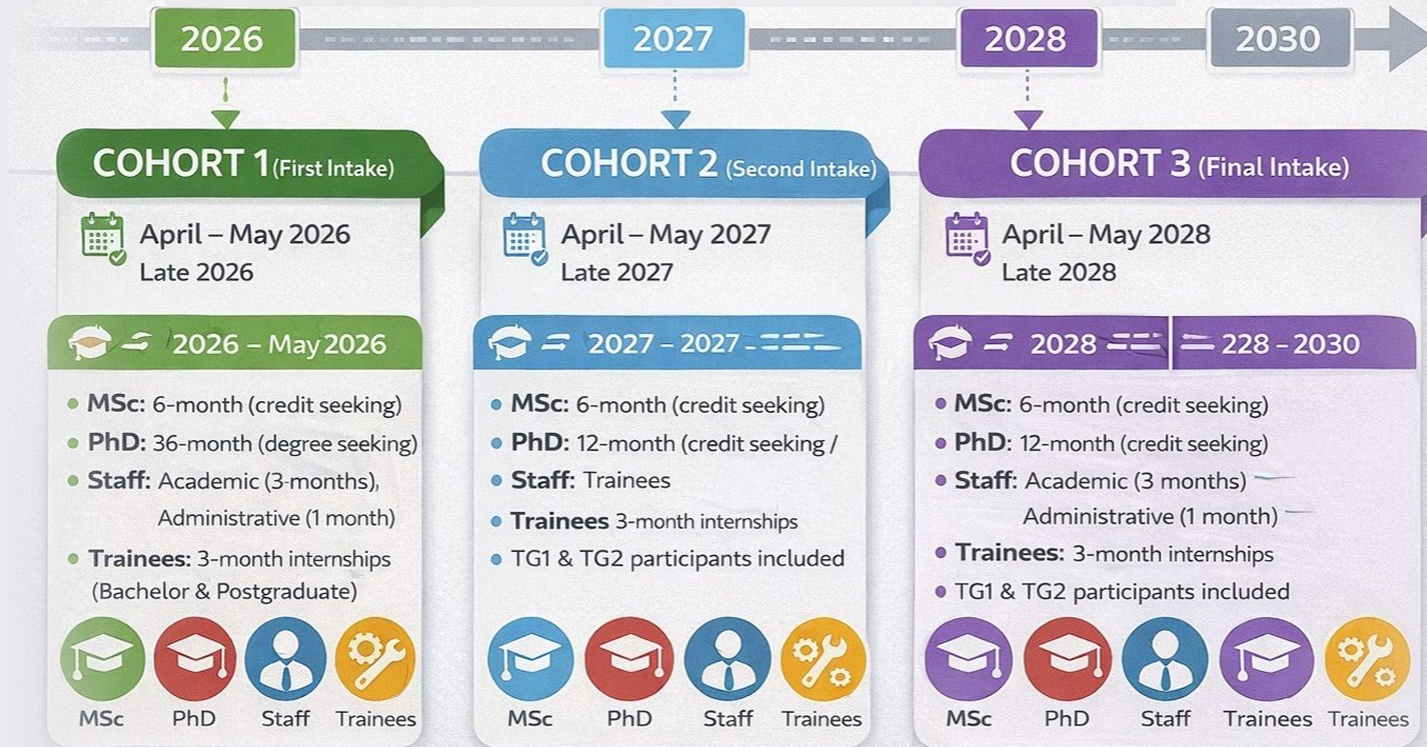
TARGET GROUP 1

CBU, NUST, AFIT,
AAU, UNZA, Wits

TARGET GROUP 2

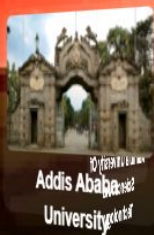
THE REST OF
AFRICA

PAP2SN



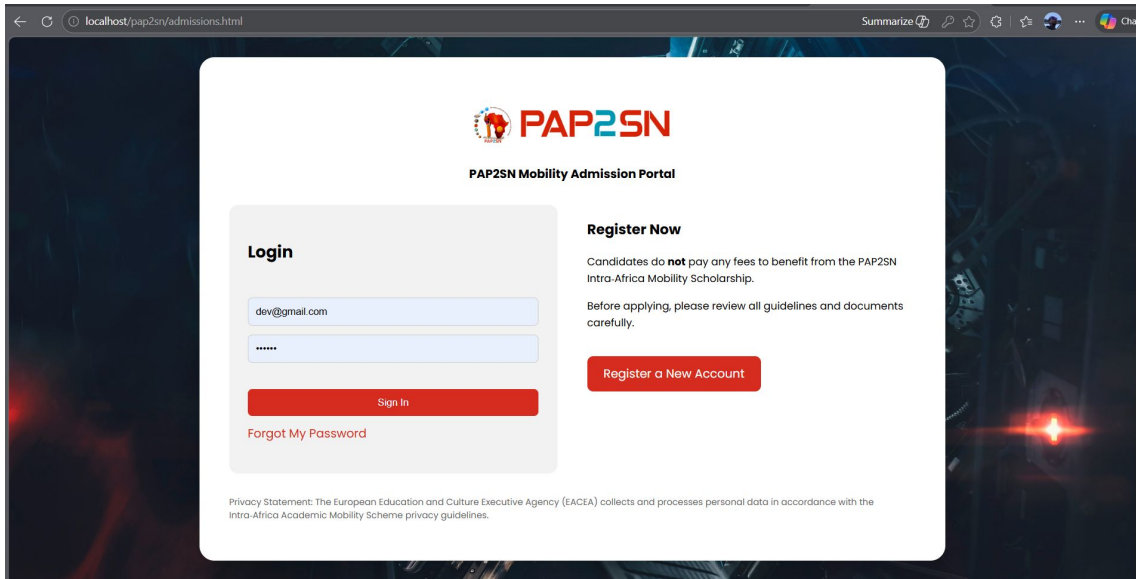


PAN-AFRICAN NETWORK FOR PLANETARY SCIENCE & TECHNOLOGY

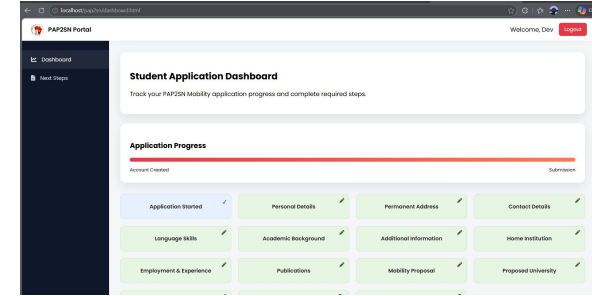


Website Infrastructure :

Student Application: *(on Website)*



Student begins application cycle on the website: by creating a PAP2SN Account that's assigned a crucial application id number for application tracking and updating

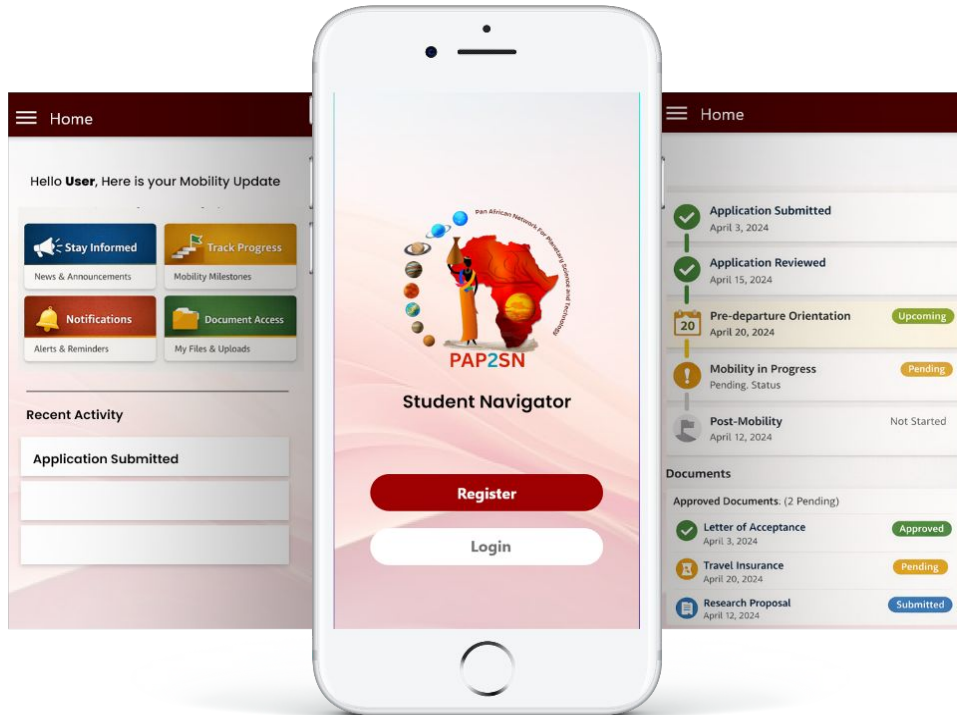


Student Dashboard ;
Shows Application Categories, with a progress bar ...

Application has auto save to allow an applicant to fill in data and return if need be

Website Infrastructure :

Student Application: Mobile App

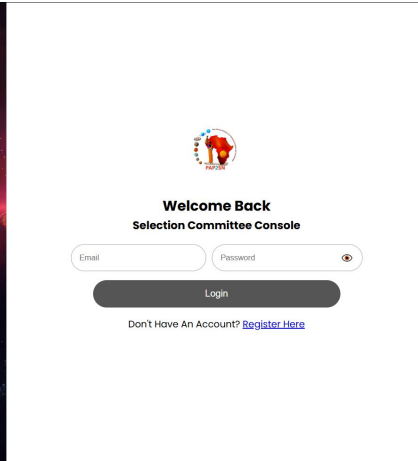


Design Philosophy:

Primary function is to Simplify, Track, and Manage the full academic mobility lifecycle.

Website Infrastructure :

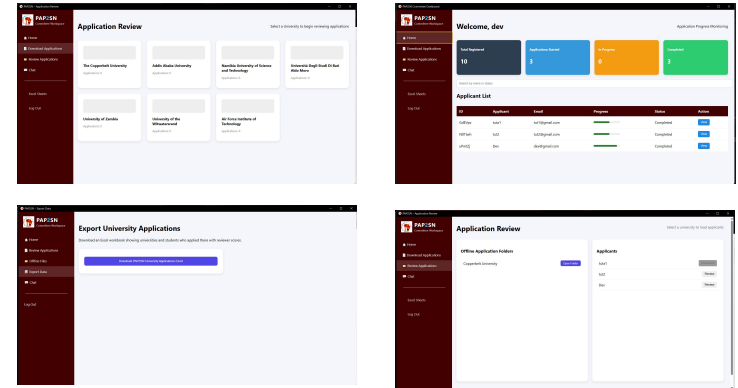
Selection Committee Console: (Admin - Functions)



Design Philosophy:

- ◆ **Controlled Collaboration**
Multiple reviewers can work independently
But within a centralized system.
- ◆ **Real time Operational Visibility.**
Across multiple platforms

Live System Screenshots



Application Reviews are done in the system , with data output as an excel sheet with summarized data.

VISIT THE PAP2SN EXHIBITION STAND



THANK YOU!

ZIKOMO

DUMELANG